

Weight and Dimensions	
Exterior dimensions (vehicle):	Length : 2,550 × Width 1,100 × Height 1,900 mm
Interior dimensions (cargo box)	Height : 1,450 × Width 910 × Length 780 mm
Additional compartments:	Height : 150 mm x Width : 300 mm x Length : 600 mm (x 2)
Usable volume	1,0m3 (or 1,000L)
Curb weight	140 kg
GVWR	375 kg
Payload	235 kg (150 kg in the cargo box)

Frame and bodywork	
Frame	Aluminum: front beam & rear chassis Steel: seat support
Cabin	Cargo box: Honeycomb composite / Polyethylene / 15 mm thick Integrated full-height tamper-proof hinges
Lock system	Locking: Key (Blockshaft lock optional)

Motorization and Battery		
	Standard Motor	Double torque Motor
Location	Crankset	Crankset+ rear axle
Brand	BAFANG	
Driven wheel(s)	1	2
Max. torque	80 Nm	150 Nm
Assistance modes	3 (1 : Eco, 2 : Normal, 3 : Boost)	
Max continuous rated power	250 W / EN15194	
Start assist throttle	Yes	
Hill climbing < 6km/h		
with 1 driver (75kg) :	15%	20%
with 1 driver (75kg) + loading 75kg :	7,5%	15%
with 1 driver (75kg) + loading 100kg :	5%	15%
with 1 driver (75kg) + loading 150kg :	2,5%	15%
Max speed	up to 25 km/h	
Walk assist	Yes (up to 6 km/h)	
Battery pack	Battery: 30Ah 36V / 1080 Wh / Li-Ion LG cells / BMS & assembly Made in France Carrying handle integrated	
Range	up to 45 km per battery	
Battery compartment	2 slots, removable, key-protected	
Charger	AC Input 100-240Vac / DC Output : 42V 4.0A / Domestic plug	
Charging time	6 hours	

Safety and Driving	
Transmission	Reinforced SRAM chains Continuously variable transmission: Enviolo Extreme Cargo
Gear box type	Manual or automatic (optional)
Brakes	Avant
	Arrière
	Hydraulic
	disc Ø260 mm × 3 mm
	disc Ø190 mm × 3 mm
Parking brake	Oversized motorcycle-type calipers
	Sintered metal pads 36 × 45 × 6 mm
	Oui
Fork	:Steel stanchions / Aluminum crowns Long-travel hydraulic suspension Steering: Patented, 2.0 m turning radius
Wheels	17" with reinforced 8G spokes (Ø4 mm)
	17" × 2.25" Hutchinson tires / puncture-resistant tubes Self-healing against nails / Smart valve with pressure indicator

Equipment and Comfort	
Windshield	Full panoramic / Polyethylene arches
Horn	Bell
Lighting	Full LED / Position / Brake / Turn signals
Mirrors	Yes
Seat	Ergonomic with lumbar support / High-density foam, adjustable (11 positions) For drivers 1.55 m to 1.95 m tall Integrated bottle holder
On-board computer	Color display, 3.5"
Adjustable stem	Yes

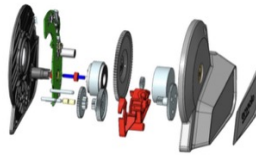
Component origin	France : 63% / Europe : 19% / Asia : 18%
------------------	--

DOUBLE TORQUE MOTOR



A second 250W motor doubles the available torque to 150Nm. Ideal for parking lot exits and heavy loads.

AUTOMATIC GEAR BOX



Gear shifts automatically, smoothly and quietly, effortlessly for ultra-intuitive driving.

ADDITIONAL BATTERY PACK



For the longest and most intensive tours, double the autonomy of your Yokler tricycle up to 90 kilometers thanks to this 1080Wh lithium ion battery pack.

CUSTOM LAYOUT



Create a custom layout tailored to your needs. Shelves, vertical dividers, lockers, insulated boxes, etc.

SHELF



Optimize your cargo storage with this removable shelf that installs and removes in seconds.

BLOCKSHAFT® LOCK SYSTEM



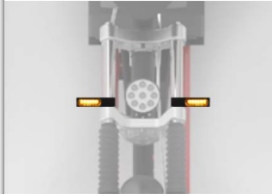
The most secure lock on the market. Close your trunk with a simple slam. Approved by major courier networks.

FLASHING LIGHT



Increase the visibility of your agents thanks to this LED flashing light which can be positioned on the roof of your tricycle. On/off button on the handlebar.

FRONT INDICATORS



Increase visibility when changing lanes with these LED front indicators paired with the rear lights (standard)

SMARTPHONE HOLDER



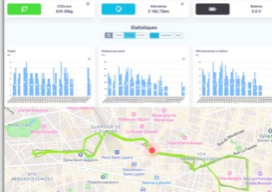
Keep your smartphone within easy reach from your handlebars to use as a GPS. Charge it directly on your dashboard using the USB port.

U LOCK



For long stops, this U-lock, which is placed in the fork, is the most effective protection. SRA class with double locking mechanism.

GPS TRACKER



Track your Yokler tricycle's movements with the GPS tracker. An effective way to optimize your trips and protect your tricycle from theft.

REMOTE-CONTROLLED CIRCUIT BREAKER



Remotely control the power supply of your Yokler tricycle with a simple press of the remote control. A simple and effective way to protect it from theft.

SUN SHIELD



Effectively protect your drivers from the sun during heat waves.

TOTAL BRANDING

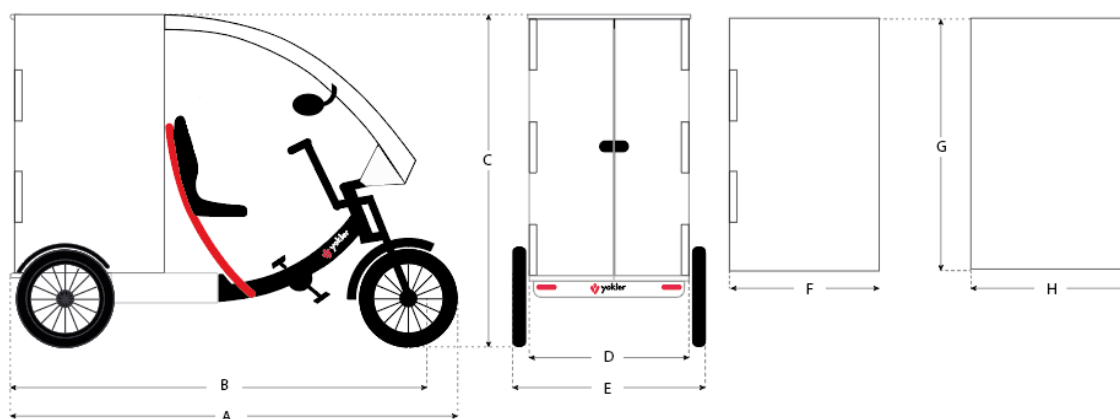


Customize your tricycle with your colors by covering all its sides for optimal visibility with an ultra-high-quality finish.

LOGO BRANDING



Opt for a partial covering to personalize your Yokler tricycle with your logo at a lower cost.



Dimensions triporteur (mm)	
A	2 550
B	2 400
C	1 900
D	930
E	1 100

Dimensions box (mm)	
F	780
G	1 450
H	910

